

Launching Web Pages from Microsoft® Windows Media® Video Files Using Windows Media® File Editor

This document assumes familiarity with the guide *Encoding Video Using Microsoft® Windows Media® Encoder V.9* in this series. To download Windows Media® Encoder visit: <http://www.microsoft.com/windows/windowsmedia/download/default.asp>

The main application used in this guide is the Windows Media® File Editor, which is installed as part of a standard installation of Windows Media® Encoder V.9.

INSERTING A WEB PAGE URL USING THE EDITOR

Run the Windows Media® File Editor by clicking **Start>All Programs>Windows Media>Utilities>Windows Media File Editor** (Figure 1). The start screen appears (Figure 2)



Figure 1. Locating Windows Media File Editor.

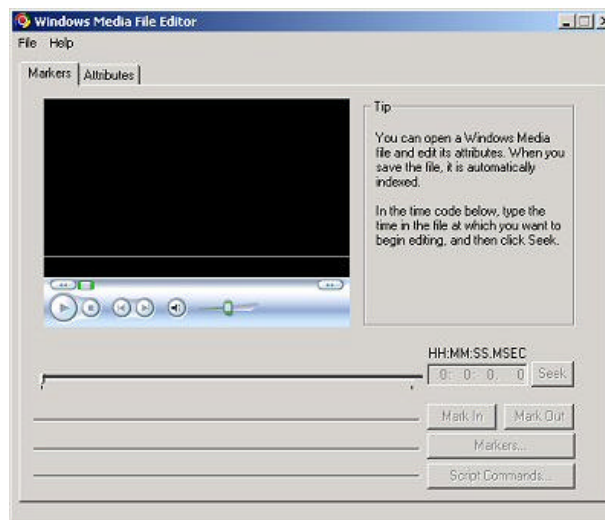


Figure 2. The Windows Media File Editor start screen.

Click on **File>Open** to locate and open the video/audio presentation that is to be used (Figure 3).

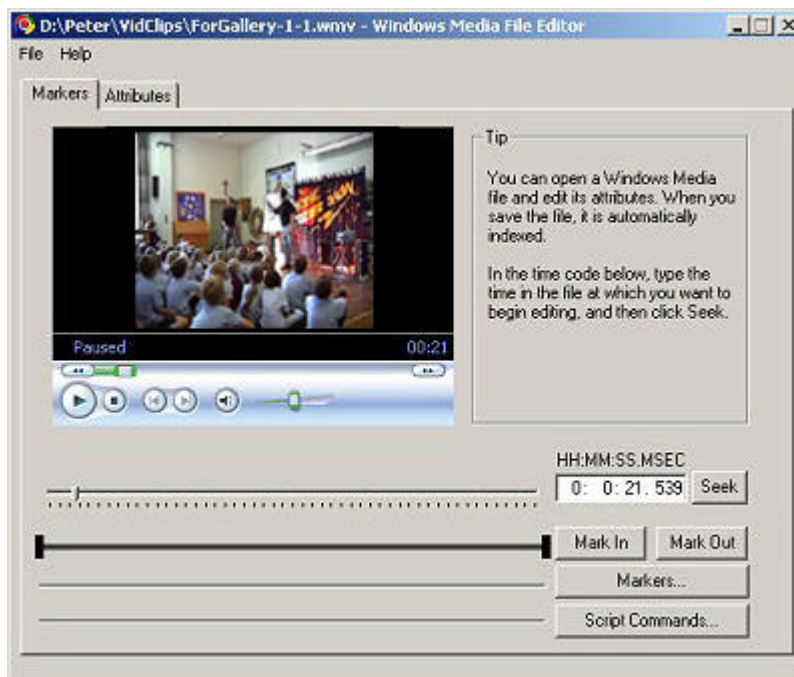


Figure 3. The loaded presentation.

Locate the point in the video where the web page URL is to be added by moving the slider (see red arrow in Figure 4) backwards and forwards. It is best to do this by clicking on the **Play** button first as this will display the contents of the file.

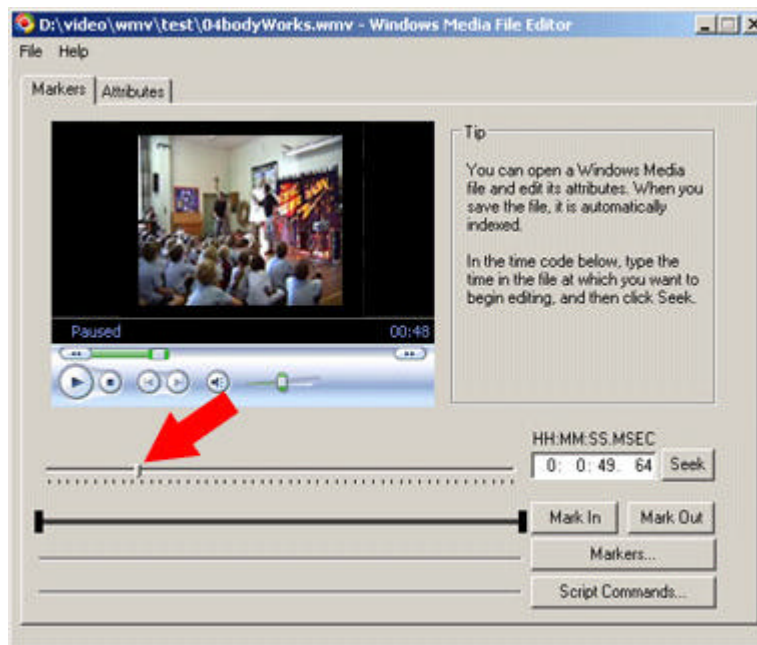


Figure 4. The slider control.

Once a point in the video to insert the URL has been selected, click on the **Script Commands** button to open the script commands window (Figure 5).

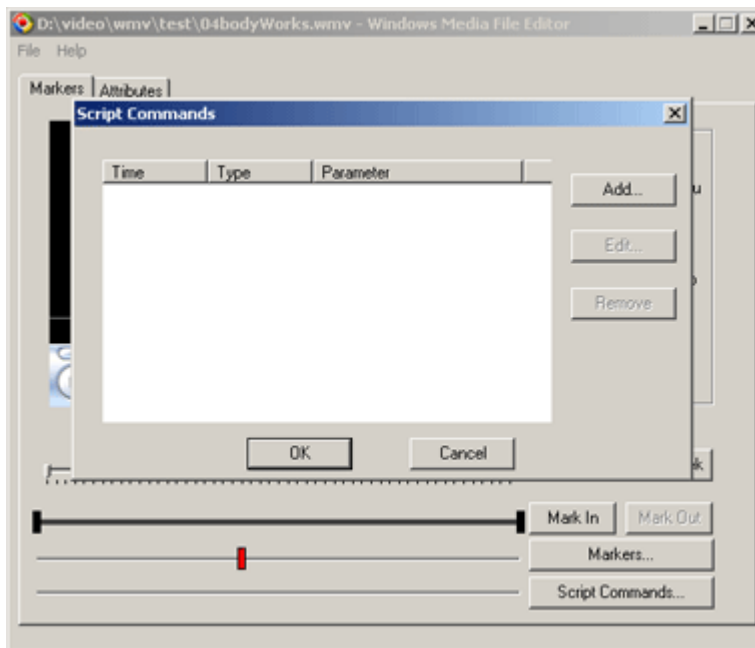


Figure 5. The Script Commands window.

Click on the **Add** button and the Script Command Properties box appears (Figure 6).

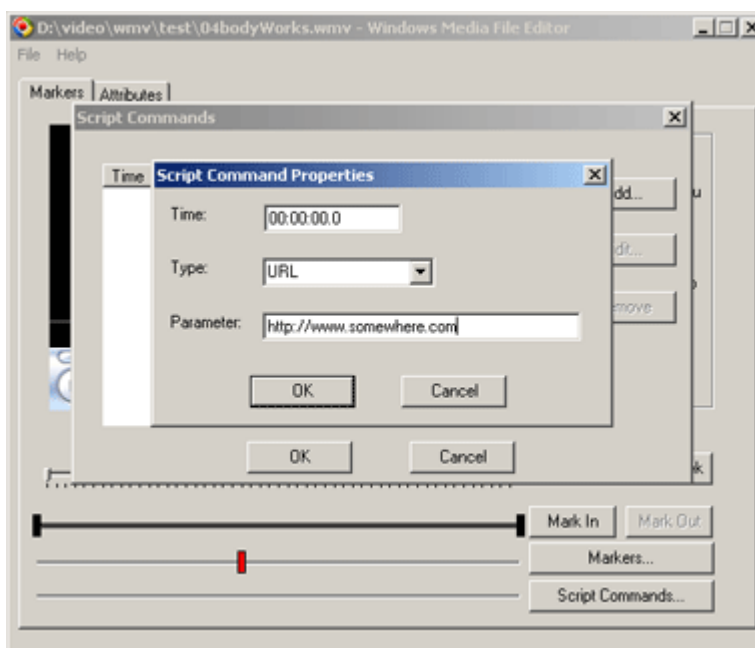


Figure 6. The Script Command Properties box.

Type the URL in the parameter box and click **OK**. The script command has been added to the list (Figure 7).

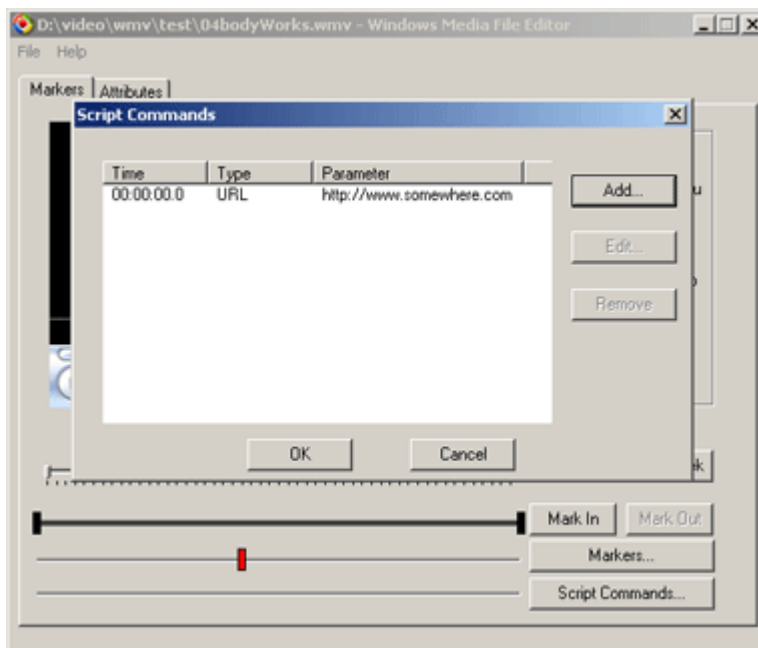


Figure 7. The script command added to the list.

Click **OK** to return to the main application window where the script command that has been inserted is visible as a little green oblong (Figure 8).

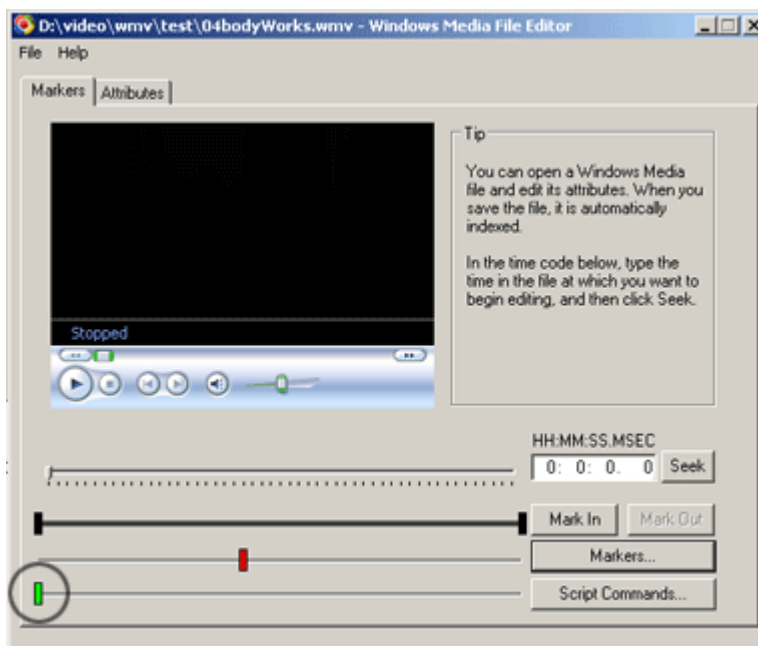


Figure 8. Indication of the inserted script command.

Next click **File>Save** and **Index**. This writes the new script command into the video file.

In order to test the script command, open Windows Media® Player. First, script commands must be enabled in the player. Click **Tools>Options** and select the **Security** tab. Make sure that the 'Run script commands when present' option is ticked (Figure 9).

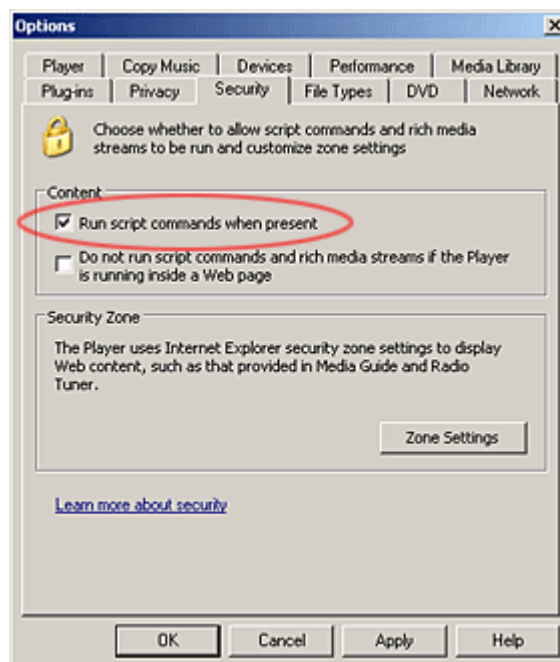


Figure 9. The Security tab and 'Run script commands when present' option.

Click on **OK** to exit.

TO SEE THE LINK IN ACTION

Click on **File>Open** and navigate to the video presentation, then double click to open it.

Once the presentation reaches the point where the script command was inserted into the video, a browser window will open with the URL that was specified in the Windows Media® File Editor.

Trademarks

- Microsoft and Windows Media are registered trademarks of Microsoft Corporation.