

## Creating Chapter Points using Microsoft® Windows Media® Video Files and the Windows Media® File Editor

This document assumes familiarity with the guide *Encoding Video Using Microsoft® Windows Media® Encoder V.9*, also in this series.

To download the Windows Media® Encoder, visit:

<http://www.microsoft.com/windows/windowsmedia/download/default.asp>

On the web page that appears, select 'Windows Media Encoder' from the first dropdown menu.

The main application that will be used in this guide is the Windows Media® File Editor which is installed as part of a standard installation of Windows Media® Encoder V.9.

### WHY USE CHAPTER POINTS?

Chapter points can be useful for organising a previously encoded MS Windows Media® video or audio presentation. The viewer can navigate to salient points within the presentation, skipping parts that are not relevant.

### CREATING CHAPTER POINTS

Chapter points are called 'marker points' in the MS Windows Media® File Editor. To insert a marker or chapter point, first run the Windows Media® File Editor. The screen shown in Figure 1 will appear.

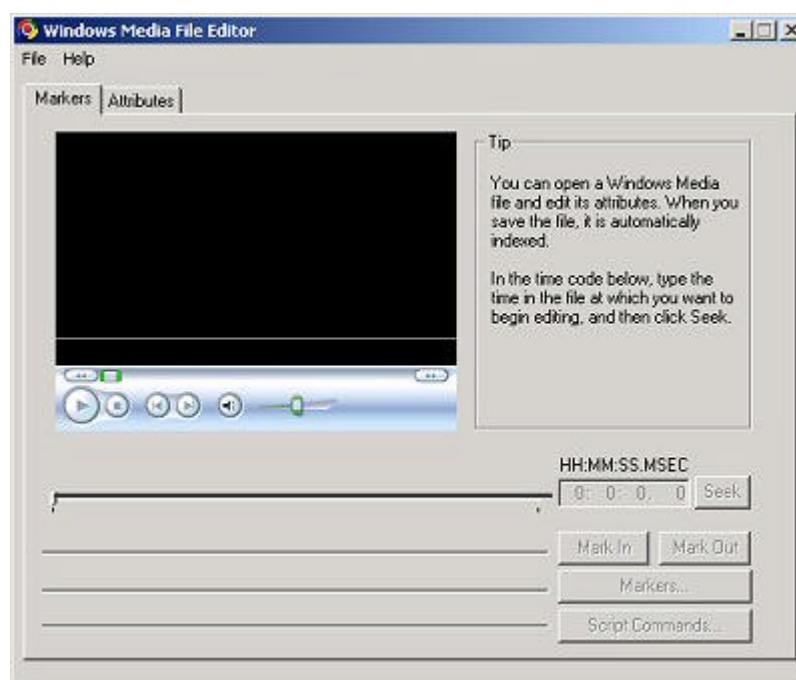


Figure 1. Windows Media® File Editor start screen.

To begin creating the marker point, click on **File>Open** and navigate to the relevant video/audio presentation. Click OK to select and load the presentation (Figure 2).

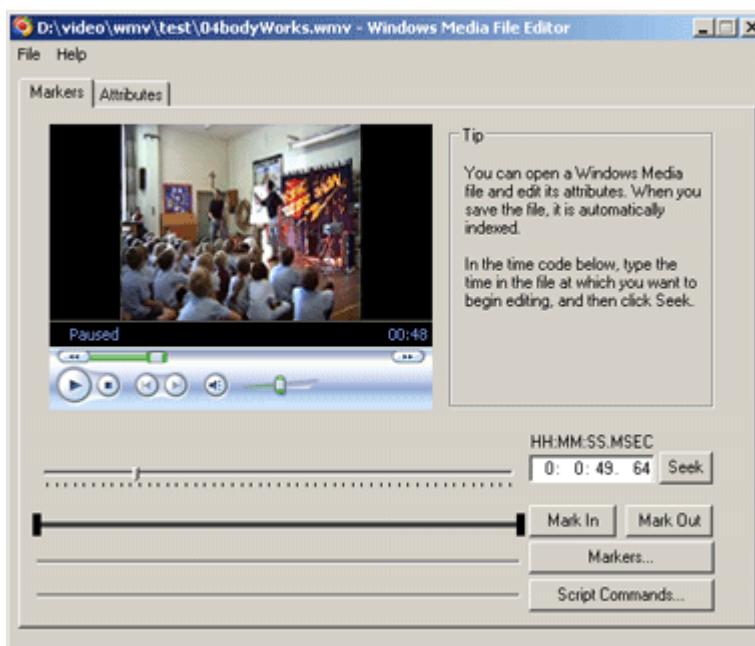


Figure 2. The loaded presentation.

Find the point in the video where a marker point should be added by moving the slider (shown with an arrow in Figure 3) backwards and forwards. It is best to do this by clicking on the 'Play' button first as this will display the contents of the file.

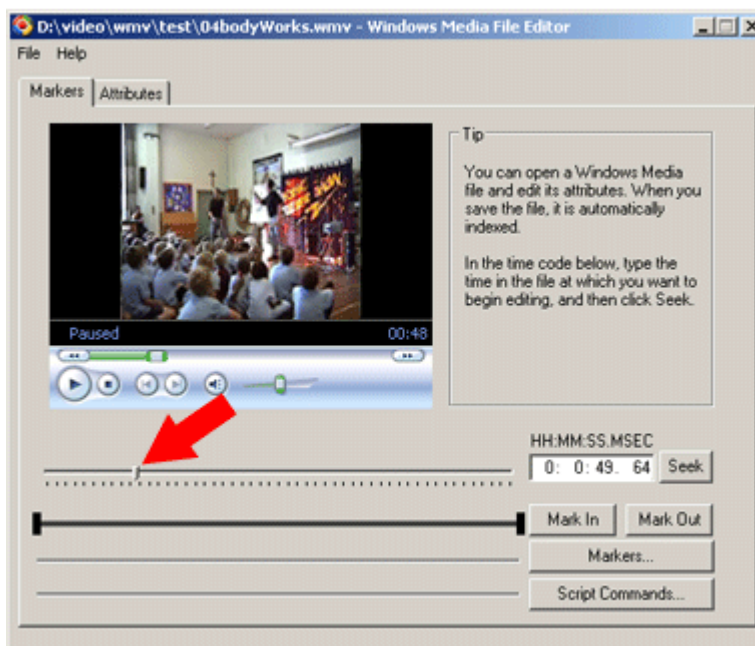


Figure 3. The slider indicated.

Once an insertion point has been selected in the video for the chapter point, click on the **Markers** button to open the 'Markers' window (Figure 4).

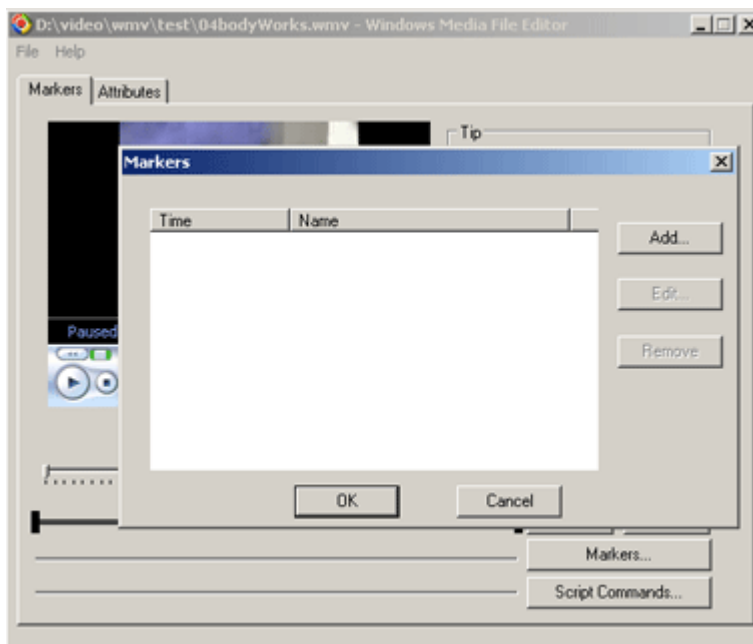


Figure 4. The 'Markers' window.

Click on the **Add** button

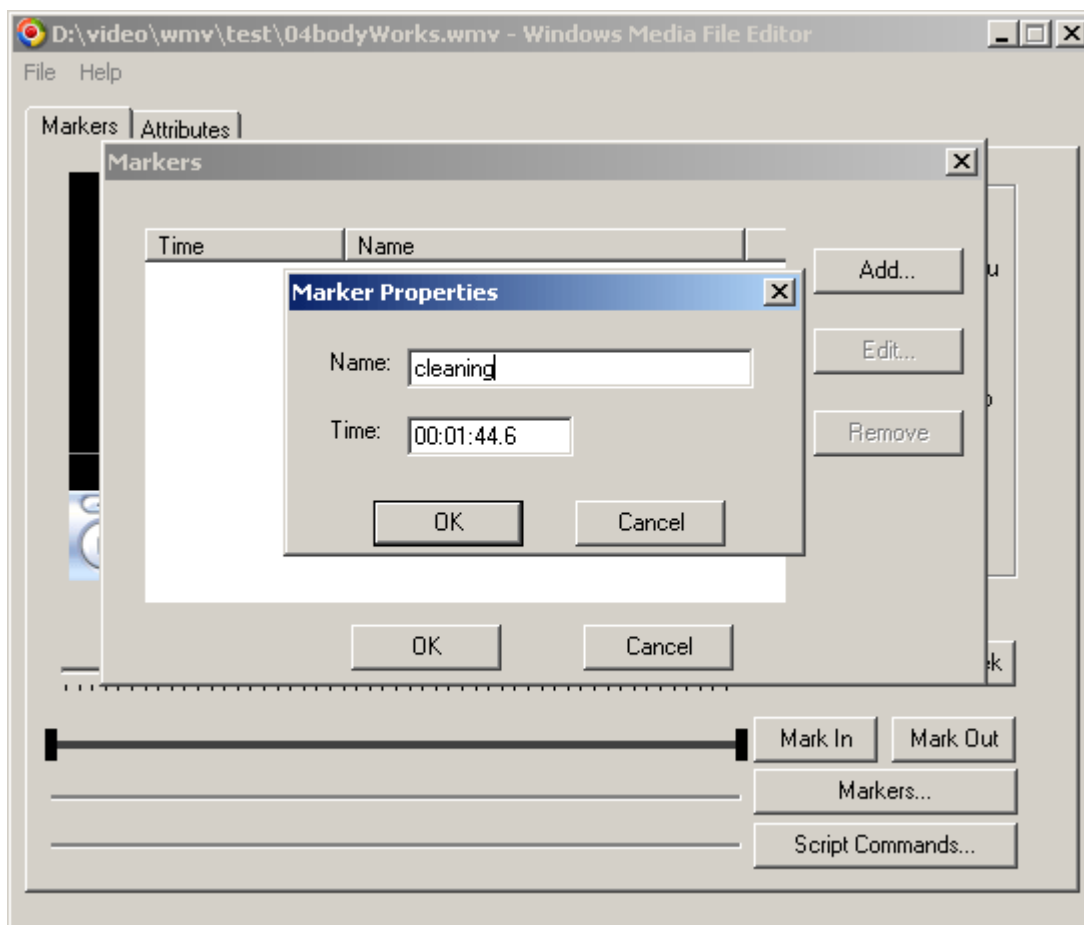


Figure 5. The 'Marker Properties' box.

Type the name of the chapter point in the 'Marker Properties' box (Figure 5) and click **OK**. The marker is added to the list (Figure 6).

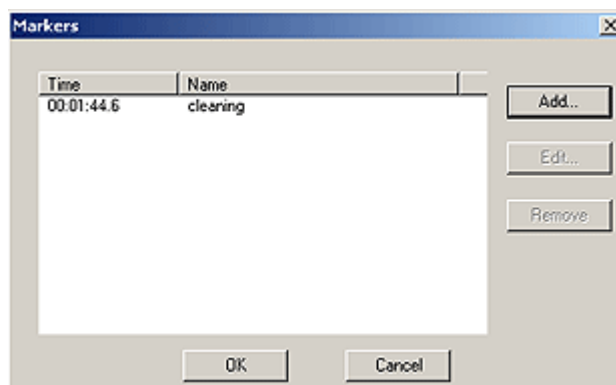


Figure 6. The markers list.

Click **OK** to return to the main application window. The marker that has been inserted is shown as a red oblong (Figure 7).

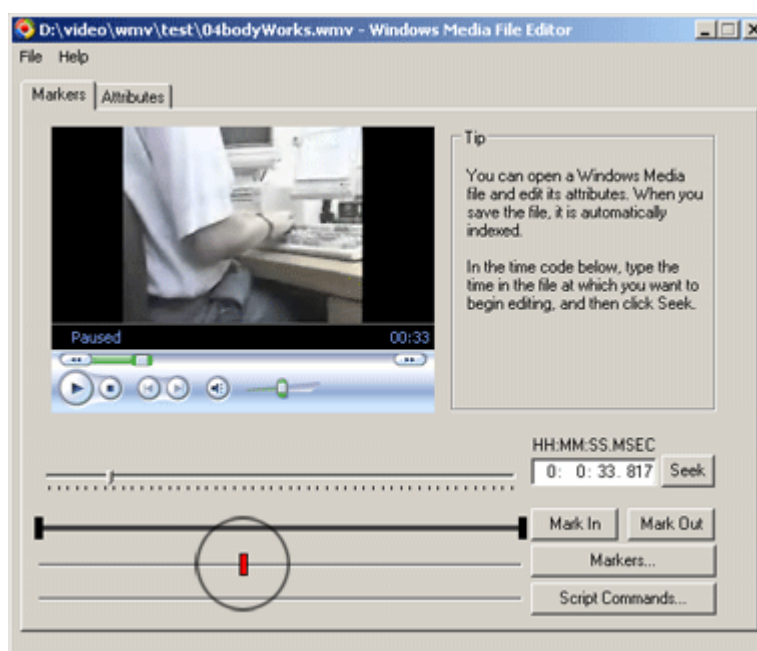


Figure 7. The new marker.

Next, click **File>Save** and **Index**. This writes the new marker point into the video file.

To test the marker point, navigate to the folder containing the original video presentation and double click to open it. It should open in Windows Media® Player.

Click **View>File Markers** to see the marker that has been inserted in the file (Figure 8). Click on the marker name. The video should now automatically move to start at the point in the video where the marker was created.

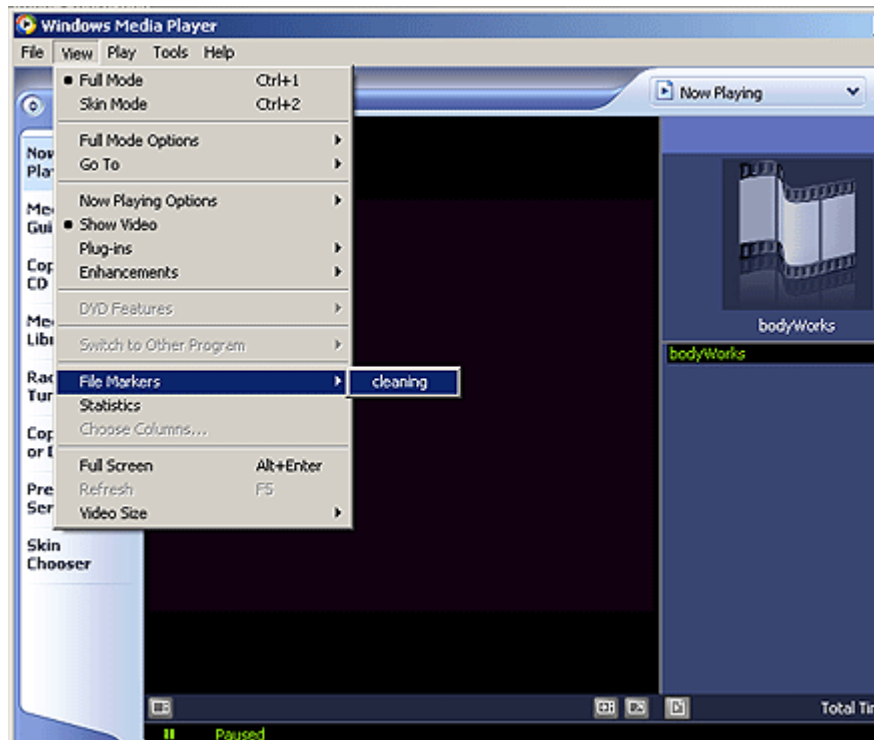


Figure 8. View>File Markers in Windows Media® Player.

### Trademarks

- Microsoft and Windows Media are registered trademarks of Microsoft Corporation.