

Setting up Apple® Darwin Streaming Server on Microsoft® Windows XP® and Windows® 2000

BEFORE YOU START

An Apple® ID is needed to download the Darwin Streaming Server software successfully. Free registration is available at:

<https://signin.apple.com/cgi-bin/WebObjects/signin.woa>

To install the software on a Microsoft Windows® XP system, the PERL programming language must be installed. The current release (5.8.3.809) of the ActivePerl package can be downloaded for free at:

http://www.activestate.com/Products/ActivePerl/more_information.plex

Ensure that the ActivePerl software is installed before continuing with the Darwin installation.

DOWNLOADING

The Darwin Streaming Server software is available from the Apple website at:

<http://developer.apple.com/darwin/projects/streaming/>

Scroll to the bottom of the page to find the **server** link for 'Windows 2000 Server/Windows 2003 Server' under 'Binary releases', which leads to the Apple ID sign-on page. After logging in the familiar Windows® dialogue box appears, asking whether to **Open** or **Save** the file 'DarwinStreamingSrvr5.0.1.1.exe'. Choose the **Save** option and save it to a temporary space on the hard disk, e.g. **C:\Temp**.

Navigate to the directory where the file was saved and double click on it. The file is a self extracting WinZip® archive and will ask where to put the Darwin Streaming Server. Use the default value already filled in of **C:\DarwinStreamingServer**. Once the self extractor has finished, close it.

Navigate to the folder where the files were unzipped. Ensure there are no programs running on the system and double click on the file entitled 'Install.bat'. This will open a DOS window where the progress of the installation can be watched. At the end of the process is a prompt for an administrator username and password to be created, after which the setup is complete.

Assuming that the installation completed without errors, the server software has been correctly installed and the following directory is created:

C:\Program Files\Darwin Streaming Server

TESTING

To test the installation of the server software, open a browser window and type the following:

<http://localhost:1220>

This is the URL to the admin pages on the server. If accessing the pages from another computer, the required URL is **<http://www.mymachinename.ac.uk:1220>** where 'mymachinename' is the name of your computer on your network. It is also possible to use the machine's IP address to access the pages, e.g. **<http://192.168.0.1:1220>**.

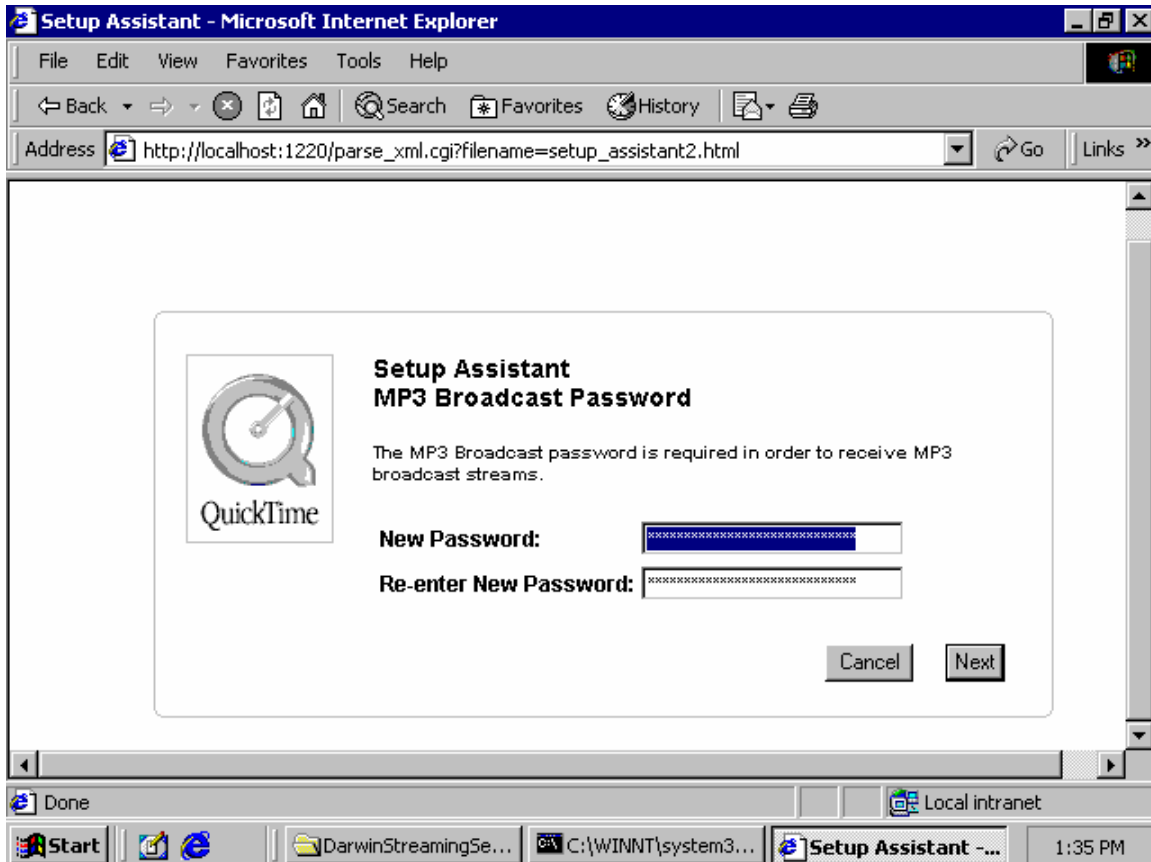


Figure 1. The Setup Assistant.

The first page of the setup assistant will appear (Figure 1), asking for a new password to be set for the MP3 broadcast facility. Either use the same user/password as the administrator account which was created during installation or specify a completely different password for MP3 broadcast. Once a password has been specified, click **Next**.

The next screen will prompt for a decision on whether to use the SSL (Secure Sockets Layer) functionality for administering the Streaming Server. In order to implement SSL, a certificate from a licensing authority such as VeriSign (<http://www.verisign.com/>) is needed. Setting up the server using SSL is outside the scope of this guide. Do not click the checkbox; click **Next** to proceed.

The next screen asks the name of the directory in which the media (the files that will be streamed) will reside. Unless otherwise required, use the default value.

The final screen is concerned with streaming on Port 80. Use this facility with caution. If streaming over Port 80 is selected and a web server such as Apache is being used, then the web server will not be able to serve content over Port 80 any longer. The same applies if IIS is being used on the same hardware as it is intended to install Darwin Streaming Server. In either case, both the web server and the Streaming Server will be trying to use Port 80 and the Streaming Server will win.

Unless there is a specific requirement to stream over Port 80, such as a need to stream content through firewalls that do not allow any other traffic, leave this option unchecked. (N.B. the Streaming Server serves content using the Real Time Streaming Protocol (RTSP) and Port 554 unless otherwise specified.)

To test streams from the server, use the test media found in:
C:\Program Files\Darwin Streaming Server\Movies

Open the Apple® QuickTime® player (must be version 6.+ to play .mpg4 content), click on **File>Open URL in New Player** and type:

rtsp://localhost/sample_100kbit.mov

or

rtsp://localhost/sample_100kbit.mp4

If the QuickTime® sample appears then the Streaming Server is functioning correctly. Sometimes it can take a considerable length of time for the movie to appear and this is a good indication that any or all of the computer hardware, the hard disks, and the processor are not fast enough/powerful enough for the job. In this case the software will need to be installed on a more powerful platform.

If the movie does not appear then consult the Darwin Streaming Server Administrator's Guide documentation at:

<http://developer.apple.com/darwin/projects/streaming/>

Trademarks

- Apple and QuickTime are registered trademarks of Apple Computer, Inc.
- Microsoft and Windows are registered trademarks of Microsoft Corporation.
- WinZip is a registered trademark of WinZip Computing.